



# **Norwich Western Link**

# **Environmental Statement**

## **Chapter 2: Existing Site**

## **Appendix 2.1: Figures**

Author: WSP UK Limited

Document Reference: 3.02.01

Version Number: 00

Date: March 2024



## **Contents**

|   |                               |   |
|---|-------------------------------|---|
| 1 | Introduction .....            | 3 |
| 2 | Existing Site – Figures ..... | 4 |

## **Figures**

|            |   |   |
|------------|---|---|
| Figure 2-1 | General Environmental Constraints ..... | 5 |
| Figure 2-2 | Source Protection Zones .....           | 7 |



## **1 Introduction**

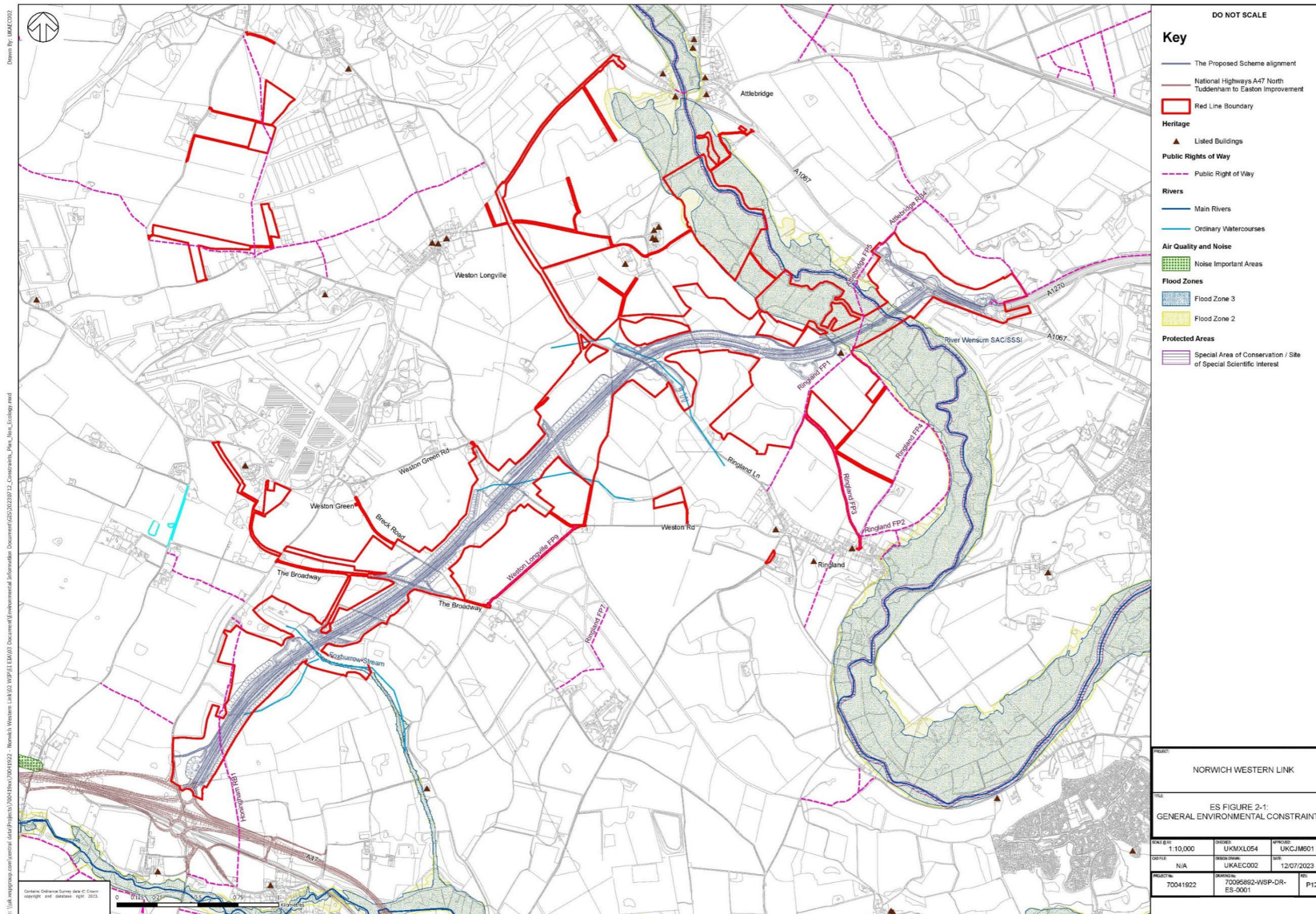
1.2.1 This appendix forms Appendix 2-1 of Chapter 2 of the Environmental Statement and includes the Figure 1 General Environmental Constraints Plan and Figure 2 Source Protection Zones.



## **2 Existing Site – Figures**

2.2.1 The figure illustrates the environmental constraints in and around the Proposed Scheme to be evaluated for significance and specific sensitivities. The plan highlights the position of listed buildings, public rights of way, main rivers, ordinary watercourses, noise important areas, relevant flood zones and environmentally sensitive protected areas, including Special Areas of Conservation and Sites of Special Scientific Interest in close proximity to or crossing the Proposed Scheme.

**Figure 2-1 General Environmental Constraints**





2.2.2 The figure illustrates the Proposed Scheme's proximity to groundwater Source Protection Zones (SPZ). SPZ are zones determined by the Environment Agency (EA) which show the level of risk to predominantly drinking water sources from contamination. The SPZs are modelled based on an estimate for how long it will take for a pollutant to travel from the water below ground (any point below the water table) to the source (the point where water is taken) and the area around the source which needs protecting from potential pollutants. The Figure references Zone 1 – Inner Protection Zone, Zone 2 – Outer Protection Zone and Zone 3 the Total Catchment.

**Figure 2-2 Source Protection Zones**

